

8

7

6

5

4

3

2

1

D

D

C

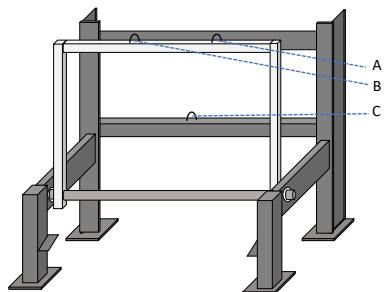
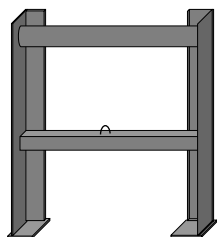
C

B

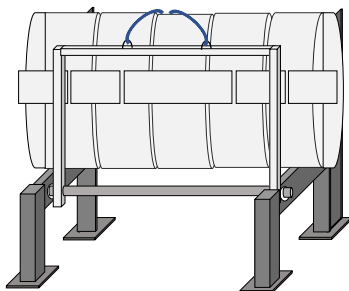
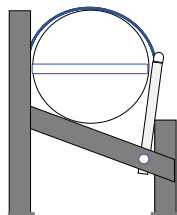
B

A

A



A-B-C  
I-Pads to be welded at three locations for  
retaining the life straps



A	12/21/2020	Issued for Review	RSSUS
Rev	Date	Comments	

**RSSUS Services Inc.**

Title

Drawing RSS-US-1XMK10S4  
Main Life Raft Cradle

Draw  
No:

RSS-US-20-08-19

8

7

6

5

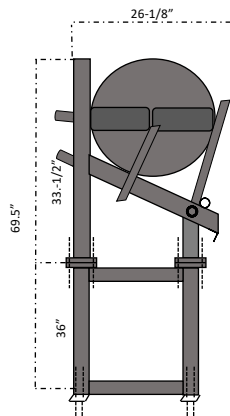
4

3

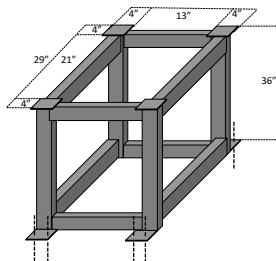
2

1

Life Raft Cradle &amp; Stacking Frame



Stacking Frame



The above life raft cradle and stacking frame are designed whereby the load is vertical and the stacking frame is suitable to be bolted to deck the vessels deck grating.

#### Weights:

- Life Raft Cradle 106lb – 48.18kgs
- Stacking Frame 95lb – 43.18kgs
- Life Raft based on 6-man 155lb – 70.45kgs
- Total weight 356lb – 161.8kgs**

The life raft cradle and stacking frame are constructed from aluminum therefore weight is kept to a minimum and all weight distribution is downward not forward as the only time the system would see horizontal pressure is when deployed, however the raft is free of the cradle in less that two seconds.

The above stacking frame is designed to enable the 1XMK 10S4 inclined life raft cradle to be stacked allowing the life raft to be deployed over hand-rails alleviating the need to cut hand-rails to fit the deck mounted inclined life raft cradle. The above stacking frame size is based on a hand-rail height of 48" (4ft). Prior to fabrication confirmation of the exact hand-rail height is required.

Item No	Description	Qty
1	Stacking Frame	1
2	2"x 2" Tubed Aluminum Frame	12
3	4" top mounting plates drilled with 1/2" holes	4
4	1/2" stainless-steel bolts/nuts/SS and Nylon washers	16
5	4" deck minting plates drilled with 1/2" holes	4
6	1/2" stainless-steel bolts/nuts/SS and Nylon washers	6

#### Notes

- A) All Members to Aluminum
- B) All Fasteners to be Stainless Steel
- C) When bolting Stainless Steel to the Aluminum Frame Nylon washers must be used to avoid metal reaction
- D) Matting pads are to be used between the mounting brackets and the deck to absorb vibration

A	12/21/2020	Issued for Review	RSSUS
Rev	Date	Comments	
<b>RSSUS Services Inc.</b>			
Title		Draw No:	RSS-US-20-08-20
Drawing RSS-US-1XMK10S5			
Stacking Frame			

8 7 6 5 4 3 2 1

**OPTION A** Diagram shows single mounting plate bolting arrangement qty 4 x per frame  
Exploded View of stacking frame floor mounting plates. The top plate would be bolted through the grating and attached to the bottom plate creating a compressed fitting against the grating, this would be on each of the four legs of the stacking frames and reduce flexing

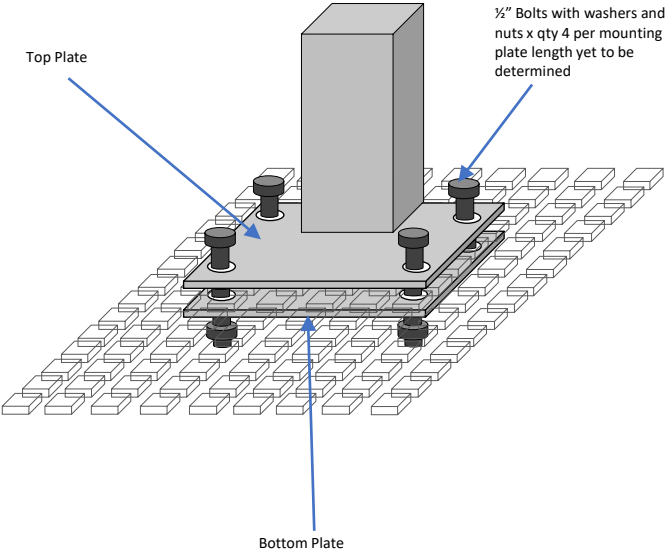
Item No	Description	Qty
1	2" x 2" upright aluminum Tubing	4
2	1/8" plate welded to upright dem's 4 x 4"	4
3	1/2" holes drilled in mounting plates	4
4	1/2" bolts & washers used length yet to be confirmed	4

D

C

B

A



A	12/21/2020	Issued for Review	RSSUS
Rev	Date	Comments	

<b>RSSUS Services Inc.</b>			
Title		Draw No:	RSS-US-20-08-21
Drawing RSS-US-1XMK10S5			
Stacking Frame			

8 7 6 5 4 3 2 1

8 7 6 5 4 3 2 1

# **OPTION B**

Is the same as option A other than two extended plates are provided to enable the stacking frame to be bolted to the main beams on the platform deck, these extended plates are shown in yellow on the drawing below, no modification is required to the stacking frames as they will be bolt onto the extended frames eradicating the need for welding and enabling the frame to be disassembled and assembled with ease. All nuts bolts and fixing with be supplied in stainless steel with plastic washers. In order to supply the two additional plates RSS would need to know the spacing between each beam and the width and depth of each main beam.

Life Raft Cradle  
bottom stacking frame

Extended Plates

Bottom Plates bolts to  
extended yellow  
plates

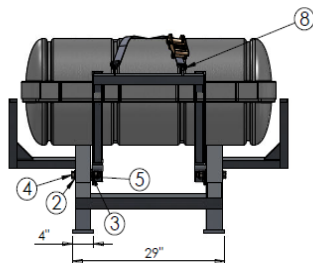
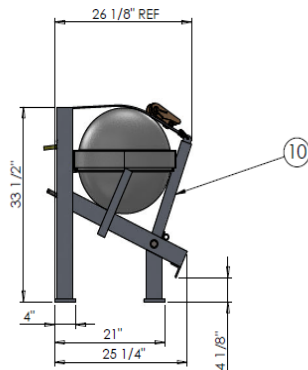
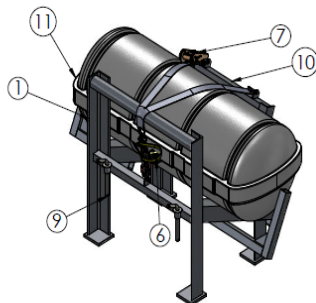
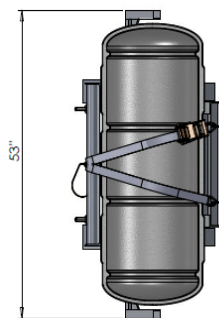
Rig Main floor Beams

Item No	Description	Qty
1	2" x 2" upright aluminum Tubing	4
2	1/8" plate welded to upright dem's 4 x 4"	4
3	1/2" holes drilled in mounting plates	4
4	1/2" bolts & washers used length yet to be confirmed	4

A	12/21/2020	Issued for Review	RSSUS
Rev	Date	Comments	

<b>RSSUS Services Inc.</b>			
Title		Draw No:	RSS-US-20-08-22
Drawing RSS-US-1XMK10S5 Stacking Frame			

8 7 6 5 4 3 2 1



ITEM NO.	DESCRIPTION	QTY.
1	RACK BASE	1
2	3/4" WASHER	4
3	3/4" PLASTIC WASHER	2
4	3/4" X 5" SS BOLT	2
5	3/4" LOCK NUT	2
6	HUR AND SHACKLES	1
7	RATCHET LASHING	1
8	DELTA QUICK LINK	3
9	SECURE PIN 5/8", SS	2
10	RACK ARM	1
11	MK10 SIZE 6 CONTAINER	1

# NOTES:

- ALL MEMBERS TO BE ALUMINIUM.
- ALL FASTENERS TO BE SS.
- WHEN FASTENING NYLOC NUTS DO NOT TIGHTEN TO, LEAVE A BIT OF A GAP TO ALLOW FREE MOTION OF THE ARMS.
- MATTING TO BE APPLIED WHERE CONTAINER CONTACTS RACK AND IN THE PATH IT WILL ROLL.
- IF RACK IS TO BE BOLTED TO VESSEL UHMW ISOLATOR PADS ARE RECOMMENDED.

## UNLESS OTHERWISE SPECIFIED:

- DIMENSIONS ARE IN INCHES
- TOLERANCES
- FINISHES
- FRACCTIONS
- DECIMALS
- ANGLES
- SURFACE FINISH

## APPLICATION

SCALE: 1:15

A	5/20/2020	ISSUED FOR RELEASE		SBUS
REVISION NO.	DAS NO.	DATE	COMMENTS	DRAWN
RSSUS Services Inc.				
TITLE:		DRAWN	SBUS	APPROVAL
DRAWN DATE		5/20/2020	APPROVAL DATE	5/20/2020
SIZE		DRAWING No.		
1XMK10S4 ALUMINIUM RACK DRAWING		B 20-RC-01125		
SHEET 1 OF 2				